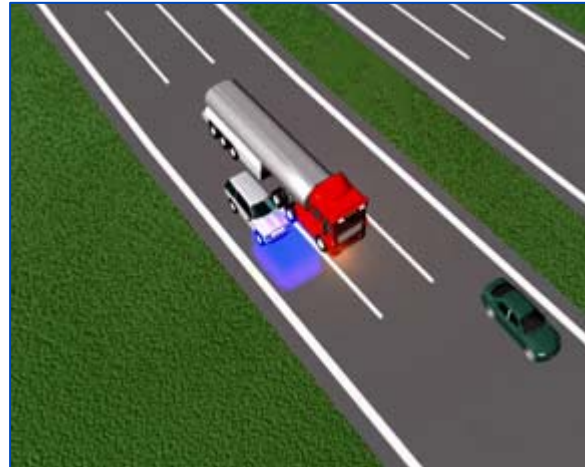


# Delphi Radar Side Alert

### ► Description

Delphi Radar Side Alert is designed to help commercial vehicle drivers detect vehicles in their side blind spot when changing lanes and making turns. Automatically enabled whenever the vehicle's ignition is on, Side Alert uses a 24 GHz radar permanently mounted on the side of the vehicle to monitor an approximate 13.1-foot (4-meter) by 8-foot (2.4-meter) area to the side of the vehicle. When a vehicle is detected in the side blind spot, Side Alert provides a visual alert in side mirror to help drivers avoid an accident. When the turn signal is activated, an audible alert is also provided.



**Delphi Radar Side Alert**

### ► Features

- Dual-beam, continuous wave (non-Doppler) radar sensing
- Object detection in side blind spot out to approximately 4 meters/13.1 feet by 2.4 meters/ 8 foot wide
  - Visual alerts for any detected vehicle
  - 1 second audible alert if turn signal activated and a vehicle is detected
- Analog output for piezoelectric beeper connection
- One-piece radar/controller, beeper and display unit with a wiring harness to connect them to vehicle power

# Delphi Radar Side Alert

### ► Benefits

- Helps provide drivers more time to react to obstacles that may be difficult to see in side mirror
- Extensive blind spot coverage area
- Provides an attractive return-on-investment
  - Helps drivers avoid lane change accidents – more than 200,000 annually in U. S. \*
  - Lane change accidents are noted as one of commercial vehicle fleets' top 3 accident types
- Provides visual freedom – does not require driver to monitor visual display unlike camera-based systems
- Operates under a wide range of environmental conditions (rain, snow, ice, fog, day, night, and noisy)
- High performance, low cost and high reliability

\*Source: NHTSA

Delphi's active safety products are designed to supplement other safety practices. The system is not designed to detect smaller objects, especially those close to the ground. There is always the possibility that an object in Side Alert's detection zone may not be detected. Responsibility for control of the vehicle and safe vehicle operation remains with the driver.