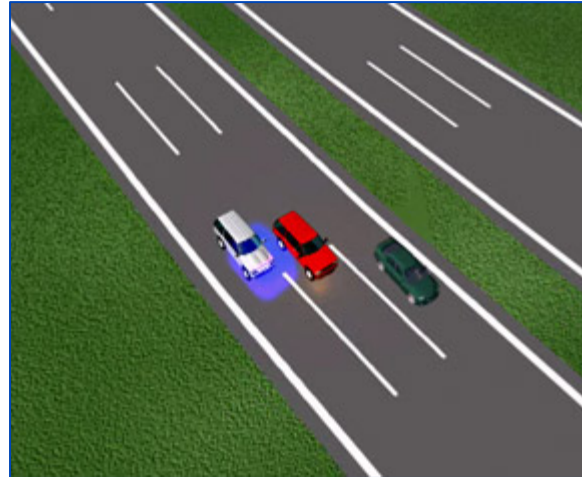


# Delphi Infrared Side Alert

### ► Description

Delphi Infrared Side Alert is designed to help drivers be aware of vehicles in their side blind spots when changing lanes and making turns. A cost-effective safety enhancement for light-duty vehicles, passive infrared sensors integrated into mirrors, taillights or side fascia measure adjacent lane temperature over time to detect vehicles entering the side blind spot. If a vehicle is detected in the blind spot, Side Alert can help drivers avoid a lane change



**Delphi Infrared Side Alert**

accident by providing a visual indication in the mirrors. When the turn signal is activated to signal a lane change, the driver also receives an audible alert.

### ► Benefits

- Helps provide drivers more time to react to people or objects that may be difficult to see in the side mirror
- Helps drivers avoid lane change accidents—more than 200,000 annually in U.S.\*
- Ignores stationary roadside objects, minimizing false alarms
- Audible alerts provided only when the turn signal is activated
- Immune to noises including jets and jackhammers

### ► Features

- Passive infrared detectors—two per sensor package
- One of the smallest packages in the industry—integrated controller and sensors
- One of the lowest-cost blind spot detection systems in the industry
- Audible and visual driver alerts

\*Source: NHTSA

Delphi's active safety products are designed to supplement other safety practices by enhancing the driver's awareness of the area in the path of the vehicle. Responsibility for safe operation of the vehicle remains with the driver.